

# GOLIATH PLUS 1

## TECHNICAL FEATURES

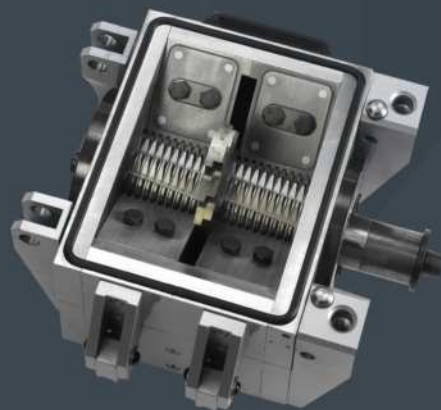
- Transmission by elastic coupling
- Slide system (see options catalogue on page 9)
- Cutting chamber : 229 x 172 mm
- Knife D 248 mm : 1 in special wear-resistant steel, reversible, sharpenable
- Tooth rollers : 2 in wear-resistant special steel, sharpenable
- Combs : 2 in wear-resistant special steel, reversible, sharpenable
- Counter-combs : 2 in special wear-resistant steel, reversible
- Rotation speed : 25 rpm
- Noise level : < 70 dBa depending on material
- Hopper (3 L) with adjustable suction cup and 38 mm suction pipe
- Welded frame with 4 castors, 2 of which have brakes
- Electrical box with emergency stop button and thermal relay
- Safety switches for opening the chute and removing the hopper
- RAL 7021 (dark grey)-9006 (aluminium grey)
- Dimensions with chute type C : L: 784 mm - W: 635 mm - H: 1276 mm



Granule size available : 4/5/6/8/10 mm



### CUTTING CHAMBER



MO-DI-TEC

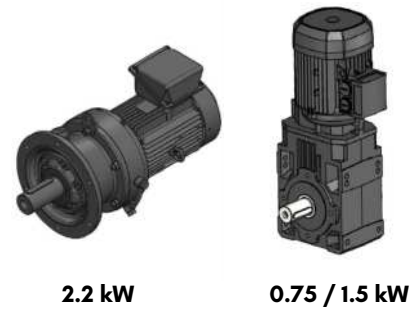
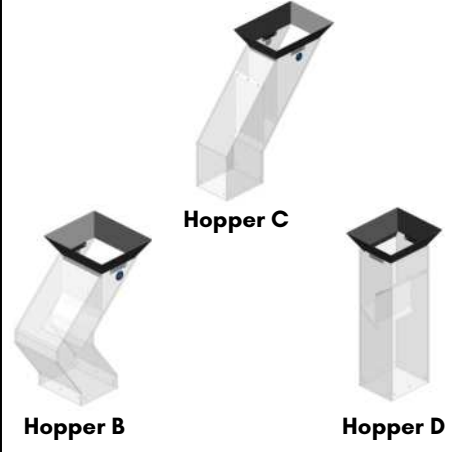
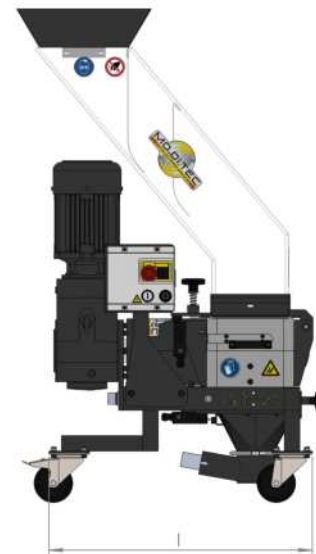
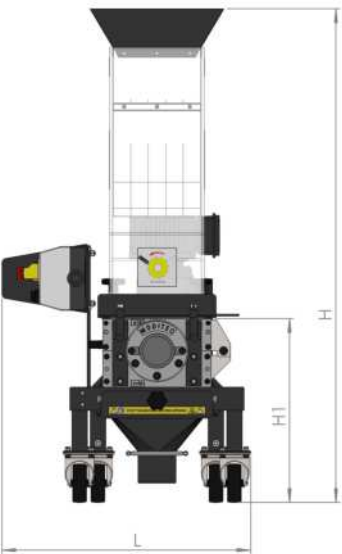
RECYCLING  
**SOLUTION**

WWW.MO-DI-TEC.FR



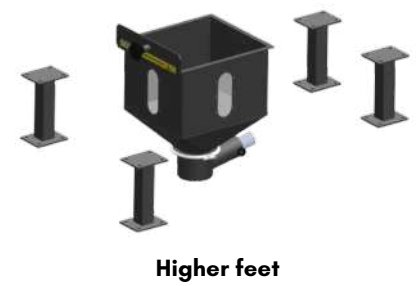
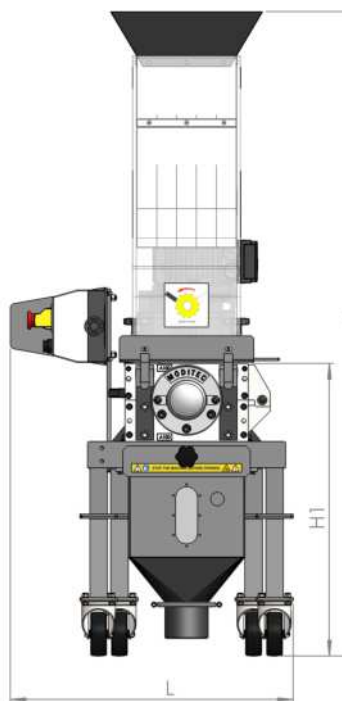
**The dimensions of GPLUS 1 with standard bin :**

GPLUS 1	Gearmotor	I	L	H	HI
Hopper B	0,75 Kw	702 mm	696 mm	1241 mm	476 mm
	1,5 kW	709 mm	696 mm	1241 mm	476 mm
	2,2 kW	1055 mm	696 mm	1241 mm	476 mm
Hopper C	0,75 kW	784 mm	635 mm	1276 mm	476 mm
	1,5 kW	785 mm	643 mm	1276 mm	476 mm
	2,2 kW	1055 mm	635 mm	1276 mm	476 mm
Hopper D	0,75 kW	702 mm	635 mm	1426 mm	476 mm
	1,5 kW	709 mm	635 mm	1426 mm	476 mm
	2,2 kW	1055 mm	635 mm	1426 mm	476 mm
Bin volum	3 Liters				



**The dimensions of GPLUS 1 with big bin :**

GPLUS 1	Gearmotor	I	L	H	HI
Hopper B	0,75 Kw	702 mm	696 mm	1431 mm	666 mm
	1,5 kW	709 mm	696 mm	1431 mm	666 mm
	2,2 kW	1055 mm	696 mm	1431 mm	666 mm
Hopper C	0,75 kW	784 mm	635 mm	1466 mm	666 mm
	1,5 kW	785 mm	643 mm	1466 mm	666 mm
	2,2 kW	1055 mm	635 mm	1466 mm	666 mm
Hopper D	0,75 kW	702 mm	635 mm	1616 mm	666 mm
	1,5 kW	709 mm	635 mm	1616 mm	666 mm
	2,2 kW	1055 mm	635 mm	1616 mm	666 mm
Bin volum	13 Liters				



# GOLIATH PLUS 2

## TECHNICAL FEATURES

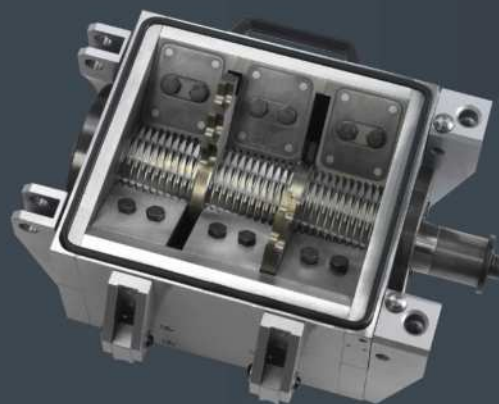
- Transmission by elastic coupling
- Slide system (see options catalogue on page 9)
- Cutting chamber : 229 X 265 mm
- Knife D 248 mm : 2 in special wear-resistant steel, reversible, sharpenable
- Tooth rollers : 3 in wear-resistant special steel, sharpenable
- Combs : 3 in wear-resistant special steel, reversible, sharpenable
- Counter-combs : 3 in special wear-resistant steel, reversible
- Rotation speed : 25 rpm
- Noise level : < 70 dBa depending on material
- Hopper (4 L) with adjustable suction cup and 38 mm suction pipe
- Welded frame with 4 castors, 2 of which have brakes
- Electrical box with emergency stop button and thermal relay
- Safety switches for opening the chute and removing the hopper
- RAL 7021 (dark grey)-9006 (aluminium grey)
- Dimensions with chute type C: L: 885 mm - W: 635 mm - H: 1329 mm



Granule size available : 4/5/6/8/10 mm



### CUTTING CHAMBER



MO-DI-TEC

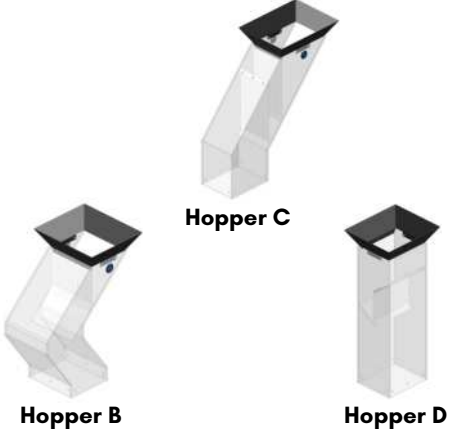
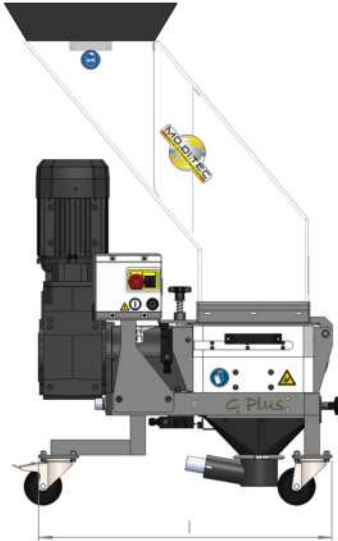
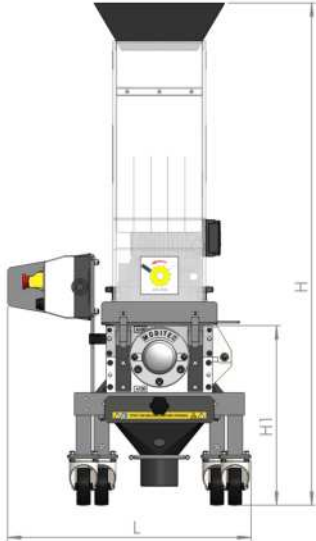
RECYCLING  
**SOLUTION**

WWW.MO-DI-TEC.FR



**The dimensions of GPLUS 2 with standard bin :**

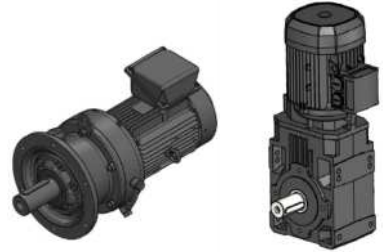
GPLUS 2	Gearmotor	I	L	H	H1
Hopper B	0,75 Kw	796 mm	696 mm	1241 mm	476 mm
	1,5 kW	789 mm	707 mm	1241 mm	476 mm
	2,2 kW	1149 mm	696 mm	1241 mm	476 mm
Hopper C	0,75 kW	796 mm	643 mm	1329 mm	476 mm
	1,5 kW	885 mm	635 mm	1329 mm	476 mm
	2.2 kW	1149 mm	643 mm	1329 mm	476 mm
Hopper D	0,75 kW	796 mm	635 mm	1426 mm	476 mm
	1,5 kW	803 mm	635 mm	1426 mm	476 mm
	2,2 kW	1149 mm	635 mm	1426 mm	476 mm
Bin volum	4 Liters				



Hopper B

Hopper C

Hopper D

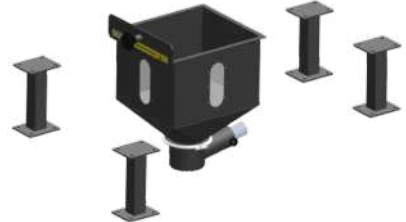
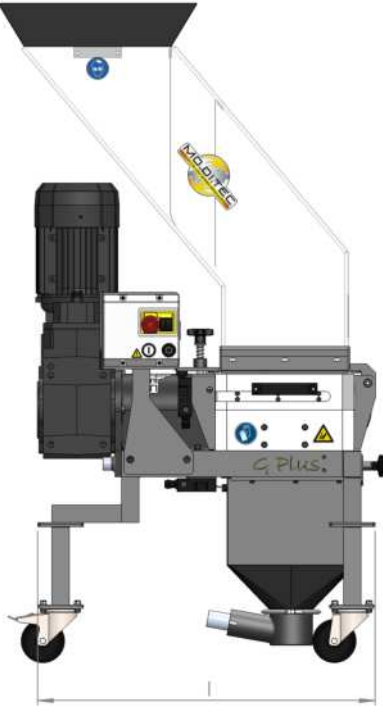
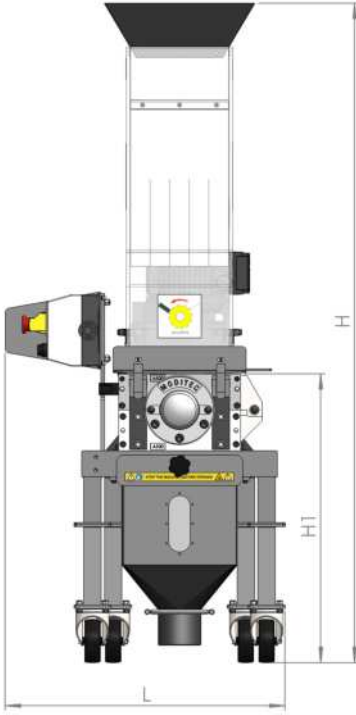


2.2 kW

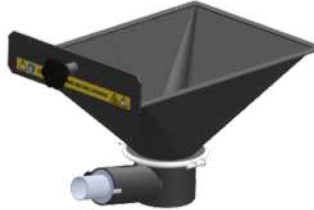
0.75 / 1.5 kW

**The dimensions of GPLUS 2 with big bin :**

GPLUS 2	Gearmotor	I	L	H	H1
Hopper B	0,75 Kw	796 mm	696 mm	1431 mm	666 mm
	1,5 kW	789 mm	707 mm	1431 mm	666 mm
	2,2 kW	1149 mm	696 mm	1431 mm	666 mm
Hopper C	0,75 kW	796 mm	643 mm	1519 mm	666 mm
	1,5 kW	885 mm	635 mm	1519 mm	666 mm
	2,2 kW	1149 mm	643 mm	1519 mm	666 mm
Hopper D	0,75 kW	796 mm	635 mm	1616 mm	666 mm
	1,5 kW	803 mm	635 mm	1616 mm	666 mm
	2,2 kW	1149 mm	635 mm	1616 mm	666 mm
Bin volum	19 Liters				



Higher feet



Standard bin

# GOLIATH PLUS 3



Granule size available : 4/5/6/8/10 mm

## TECHNICAL FEATURES

- Transmission by elastic coupling
- Slide system (see options catalogue on page 9)
- Cutting chamber : 229 x 359 mm
- Knife D 248 mm : 3 in special wear-resistant steel, reversible, sharpenable
- Tooth rollers : 4 in wear-resistant special steel, sharpenable
- Combs : 4 in wear-resistant special steel, reversible, sharpenable
- Counter-combs : 4 in special wear-resistant steel, reversible
- Rotation speed : 25 rpm
- Noise level : < 70 dBa depending on material
- Hopper (9 L) with adjustable suction cup and 38 mm suction pipe
- Welded frame with 4 castors, 2 of which have brakes
- Electrical box with emergency stop button and thermal relay
- Safety switches for opening the chute and removing the hopper
- RAL 7021 (dark grey)-9006 (aluminium grey)
- Dimensions with chute type C: L: 896 mm - W: 635 mm - H: 1426 mm



## CUTTING CHAMBER



MO-DI-TEC

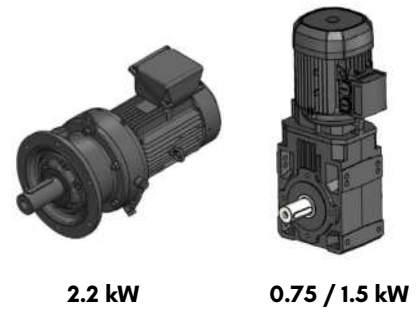
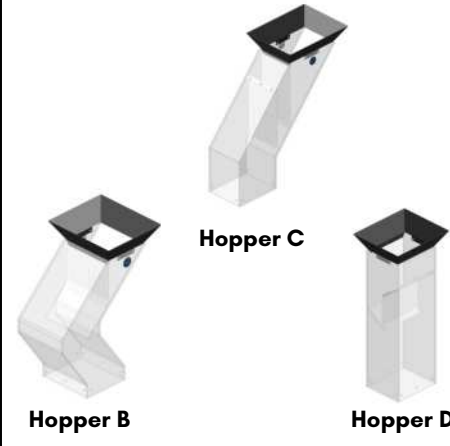
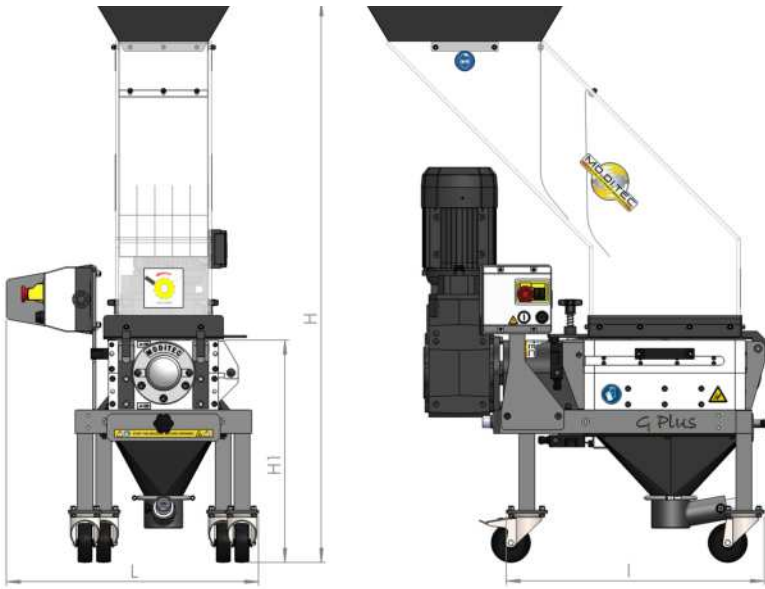
RECYCLING  
**SOLUTION**

WWW.MO-DI-TEC.FR



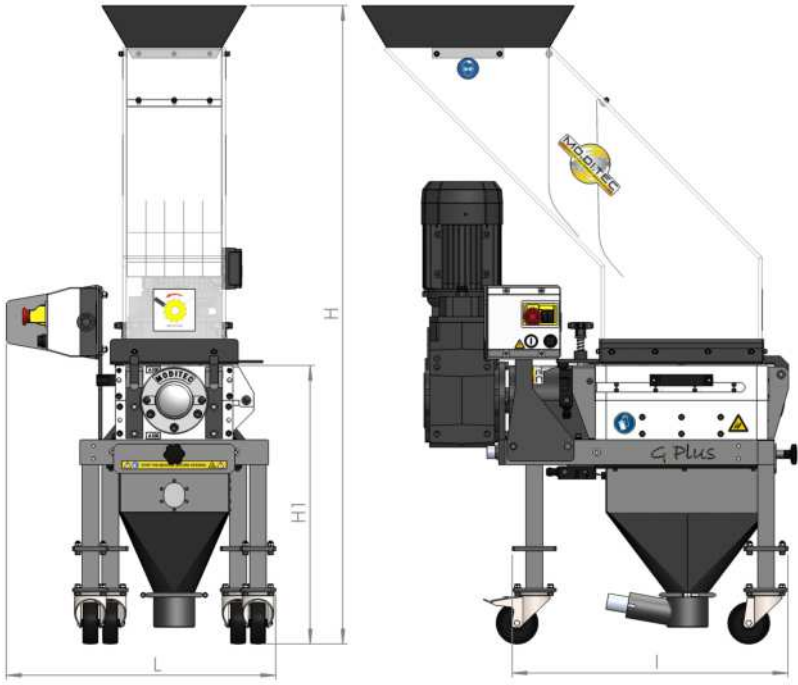
**The dimensions of GPLUS 3 with standard bin :**

GPLUS 3	Gearmotor	I	L	H	H1
Hopper B	1.5 kW	896 mm	696 mm	1331 mm	566 mm
	2,2 kW	1242 mm	696 mm	1331 mm	566 mm
Hopper C	1.5 kW	896 mm	635 mm	1426 mm	566 mm
	2,2 kW	1242 mm	635 mm	1426 mm	566 mm
Hopper D	1.5 kW	896 mm	635 mm	1516 mm	566 mm
	2,2 kW	1242 mm	635 mm	1516 mm	566 mm
Bin volum	9 Liters				



**The dimensions of GPLUS 3 with big bin :**

GPLUS 3	Gearmotor	I	L	H	H1
Hopper B	1.5 kW	896 mm	696 mm	1431 mm	666 mm
	2,2 kW	1242 mm	696 mm	1431 mm	666 mm
Hopper C	1.5 kW	896 mm	635 mm	1526 mm	666 mm
	2,2 kW	1242 mm	635 mm	1526 mm	666 mm
Hopper D	1.5 kW	896 mm	635 mm	1616 mm	666 mm
	2,2 kW	1242 mm	635 mm	1616 mm	666 mm
Bin volum	20 Liters				



# GOLIATH PLUS 4



Granule size available : 4/5/6/8/10 mm

## TECHNICAL FEATURES

- Transmission by elastic coupling
- Slide system (see options catalogue on page 9)
- Cutting chamber : 229 x 453 mm
- Knife D 248 mm : 4 in special wear-resistant steel, reversible, sharpenable
- Tooth rollers : 5 in wear-resistant special steel, sharpenable
- Combs : 5 in wear-resistant special steel, reversible, sharpenable
- Counter-combs : 5 in special wear-resistant steel, reversible
- Rotation speed : 25 rpm
- Noise level : < 70 dBa depending on material
- Hopper (11 L) with adjustable suction cup and 38 mm suction pipe
- Welded frame with 4 castors, 2 of which have brakes
- Electrical box with emergency stop button and thermal relay
- Safety switches for opening the chute and removing the hopper
- RAL 7021 (dark grey)-9006 (aluminium grey)
- Dimensions with chute type C: L: 990 mm - W: 635 mm - H: 1466 mm



## CUTTING CHAMBER



MO-DI-TEC

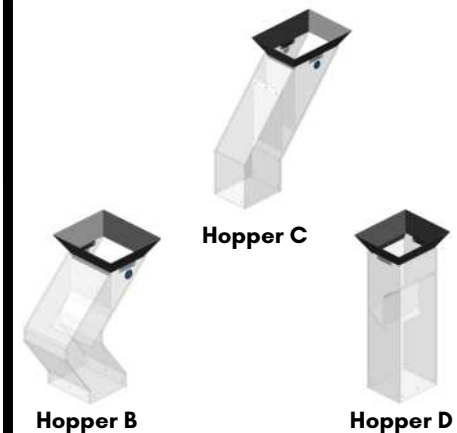
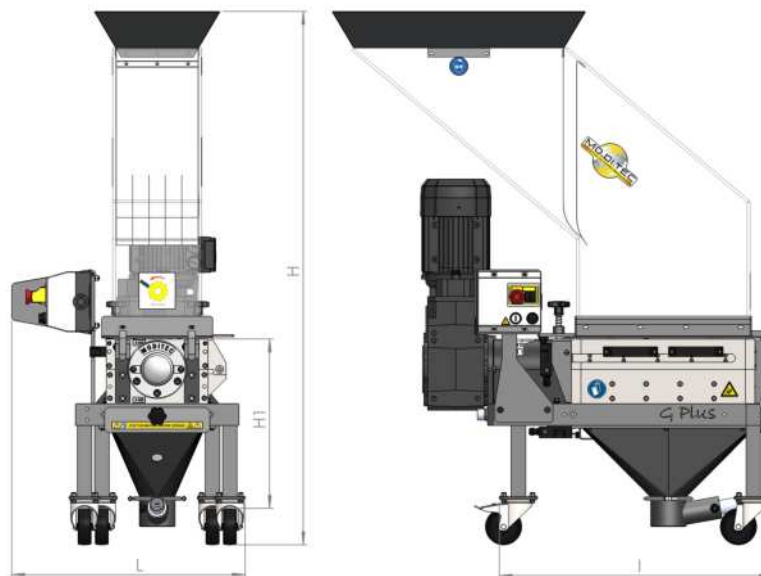
RECYCLING  
**SOLUTION**

[WWW.MO-DI-TEC.FR](http://WWW.MO-DI-TEC.FR)



**The dimensions of GPLUS 4 with standard bin :**

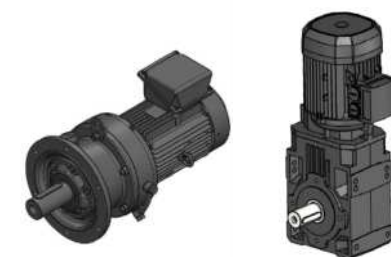
GPLUS 4	Gearmotor	I	L	H	H1
Hopper B	1.5 kW	990 mm	696 mm	1331 mm	566 mm
	2,2 kW	1336 mm	696 mm	1331 mm	566 mm
Hopper C	1.5 kW	990 mm	635 mm	1466 mm	566 mm
	2,2 kW	1336 mm	643 mm	1466 mm	566 mm
Hopper D	1.5 kW	990 mm	635 mm	1516 mm	566 mm
	2,2 kW	1336 mm	635 mm	1516 mm	566 mm
Bin volum	11 Liters				



Hopper B

Hopper C

Hopper D

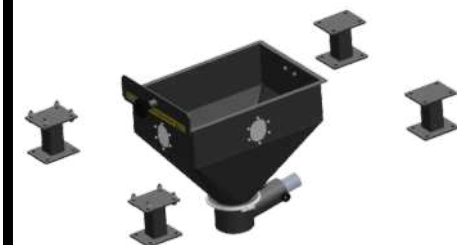
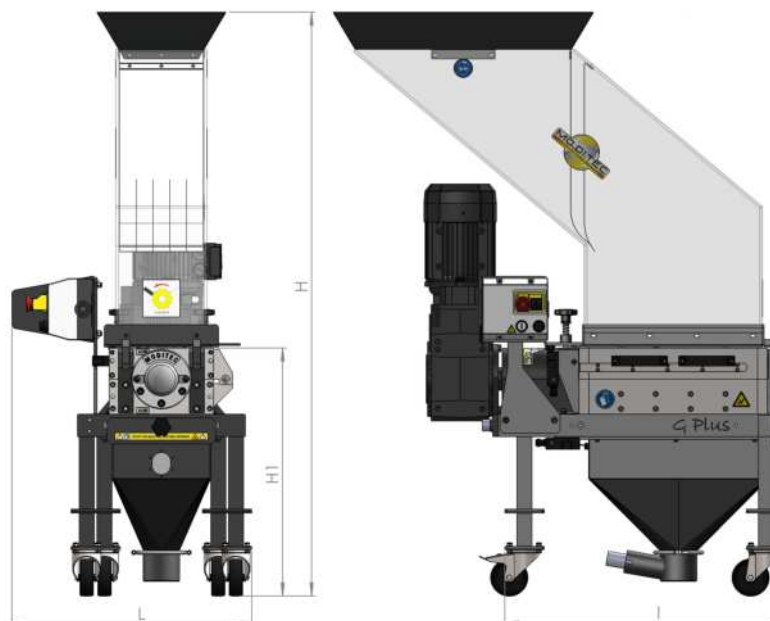


2.2 kW

0.75 / 1.5 kW

**The dimensions of GPLUS 4 with big bin :**

GPLUS 4	Gearmotor	I	L	H	H1
Hopper B	1.5 kW	990 mm	696 mm	1431 mm	666 mm
	2,2 kW	1336 mm	696 mm	1431 mm	666 mm
Hopper C	1.5 kW	990 mm	635 mm	1566 mm	666 mm
	2,2 kW	1336 mm	643 mm	1566 mm	666 mm
Hopper D	1.5 kW	990 mm	635 mm	1616 mm	666 mm
	2,2 kW	1336 mm	635 mm	1616 mm	666 mm
Bin volum	24 Liters				



Higher feet



Standard bin

# GOLIATH PLUS TWIN



**Granule size available : 4/5/6/8/10 mm**

## TECHNICAL FEATURES

- Transmission by elastic coupling
- Slide system (see options catalogue on page 9)
- Cutting chamber : 510 x 453mm
- Knife D 248 mm : 7 in special steel with anti-wear treatment, reversible, can be sharpened
- Toothed rollers : 9 in special steel with anti-wear treatment, can be sharpened
- Combs : 9 in special steel with anti-wear treatment, reversible, can be sharpened
- Counter combs : 9 in special anti-abrasion steel, reversible
- Rotation speed : 25 rpm
- Sound level : < 70 dBa depending on material
- Hopper (24 L) with adjustable suction cup and 38 mm suction pipe
- Welded frame with 4 castors, 2 of which have brakes
- Electrical box with programmable controller and LCD display for parameter management
- Chute opening and hopper removal safety switches
- RAL 7021 (dark grey)-9006 (aluminum grey)
- Dimensions with soundproof trunking: L: 1477 mm - W: 790 mm - H: 1691 mm



### CUTTING CHAMBER



**MO-DI-TEC**

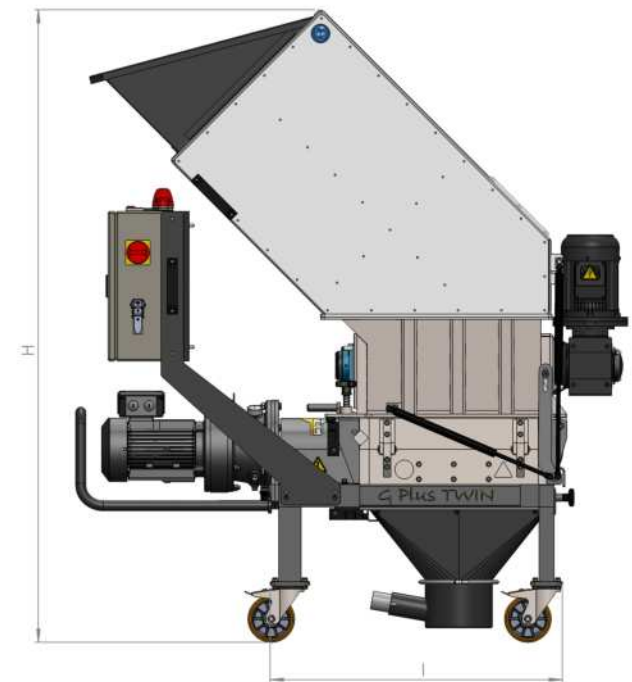
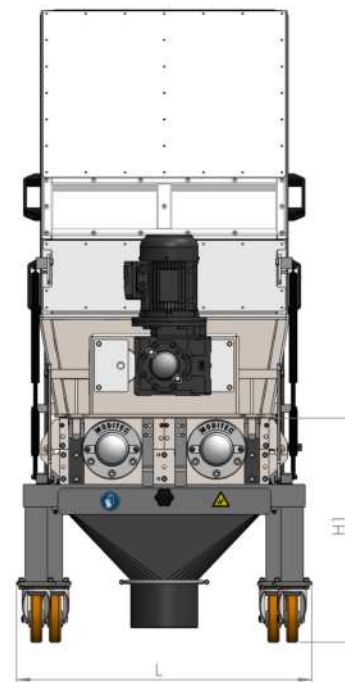
**RECYCLING  
SOLUTION**

[WWW.MO-DI-TEC.FR](http://WWW.MO-DI-TEC.FR)



**The dimensions of GPLUS TWIN with standard bin**

GPLUS TWIN	Gearmotor	I	L	H	H1
With MASHER	2 X 2.2 kW	1477 mm	790 mm	1691 mm	606 mm
Without MASHER	2 X 2.2 kW	1334 mm	790 mm	1691 mm	606 mm
Bin volum	24 Liters				



**The dimensions of GPLUS TWIN with big bin**

GPLUS TWIN	Gearmotor	I	L	H	H1
With MASHER	2 X 2.2 kW	1477 mm	790 mm	1791 mm	706 mm
Without MASHER	2 X 2.2 kW	1334 mm	790 mm	1791 mm	706 mm
Bin volum	51 Liters				

